



YD MOBILE

What's New

Version 4.4.0

Release Date: 8/23/2023

Table of Contents

- Table of Contents..... 2
- Summary 3
- Pre-configuration..... 3
- Main Navigation Enhancements 4
 - Improved Recipe Navigation** 4
- Picture Management Enhancements..... 4
 - Camera & Library Permissions Alert Notification** 4
- Transfer Filters and Ordering Enhancement..... 5
 - Key Features**..... 5
 - Search Bar:**..... 5
 - Status Filtering:**..... 5
 - Ordering Options:**..... 5



Summary

This document provides detailed information on navigating the Yellow Dog Mobile Application, YD Mobile.

YD Mobile is a versatile application facilitating tasks such as inventory management, price adjustments, item scanning, accessing resources like recipes and videos, manual on-hand adjustments, item requests, transfer handling, and physical inventory counts.

Support Hotline: 757.663.7514 (9am – 8pm EST Monday – Friday)

Emergency Support: 757.818.9360, option 2

Submit Tickets to Support: [Portal.Yellowdogsoftware.com](https://portal.yellowdogsoftware.com)

[Click here](#) to schedule a **thirty-minute training session**. Training is up to one hour and free of charge to any customers currently on support.

To access our **Knowledge Base**, click [here](#).

Pre-configuration

Use of the YD Mobile app is only compatible with Yellow Dog version 370 and higher. If you are currently on another version of Yellow Dog, you will need to consult your Implementation Guide or contact Support for upgrade scheduling or about becoming hosted.

To install YD Mobile, navigate to the Google Play Store or the App Store and search “YD Mobile”.

Google Play Store:

https://play.google.com/store/search?q=YD%20mobile&c=apps&hl=en_US&gl=US

App Store:

<https://apps.apple.com/us/app/yd-mobile/id1382999286>

Once downloaded, hosted customers will need their Client ID, Username, and Password. This information can be obtained from your Implementation Guide or by contacting Support.

Main Navigation Enhancements

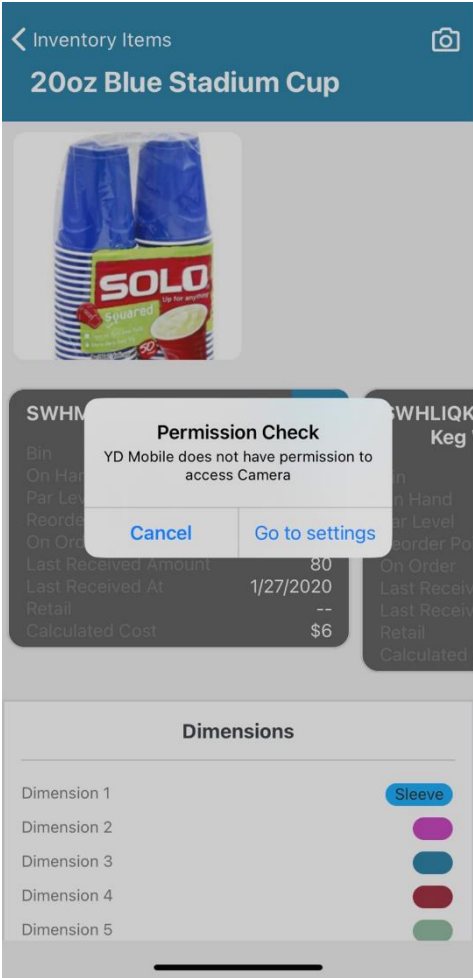
Improved Recipe Navigation

This release allows users to effortlessly switch between main recipes and sub-recipes. Clients can seamlessly move between main recipes and their corresponding sub-recipes with the press of the back button.

Picture Management Enhancements

Camera & Library Permissions Alert Notifications

Users will now receive alert notifications whenever access to their device's camera or library is required within YD Mobile's workflows. If the necessary permissions are not enabled, the alert will guide users to their device settings so the necessary adjustments can be made. This enhancement ensures a smoother user experience when utilizing camera or library features.



Transfer Filters and Ordering Enhancement

This update brings enhancements to the Transfers List for both Transfer Issuance and Transfer Acceptance. 4.4 adds convenient filtering and sorting features, including a search bar, status filtering, and ordering options.

Key Features

Search Bar:

Users can now search for a transfer either by the transfer number or description.

Status Filtering:

Users are now able to filter the transfer list based on the following statuses:

- Closed
- Open
- Rescinded
- Issued
- Accepted
- Unknown

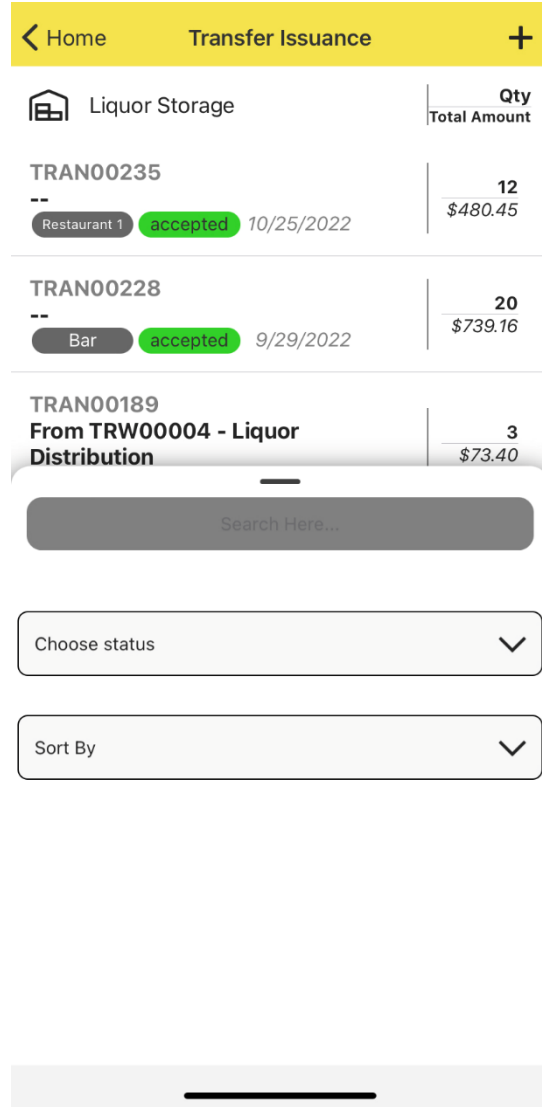
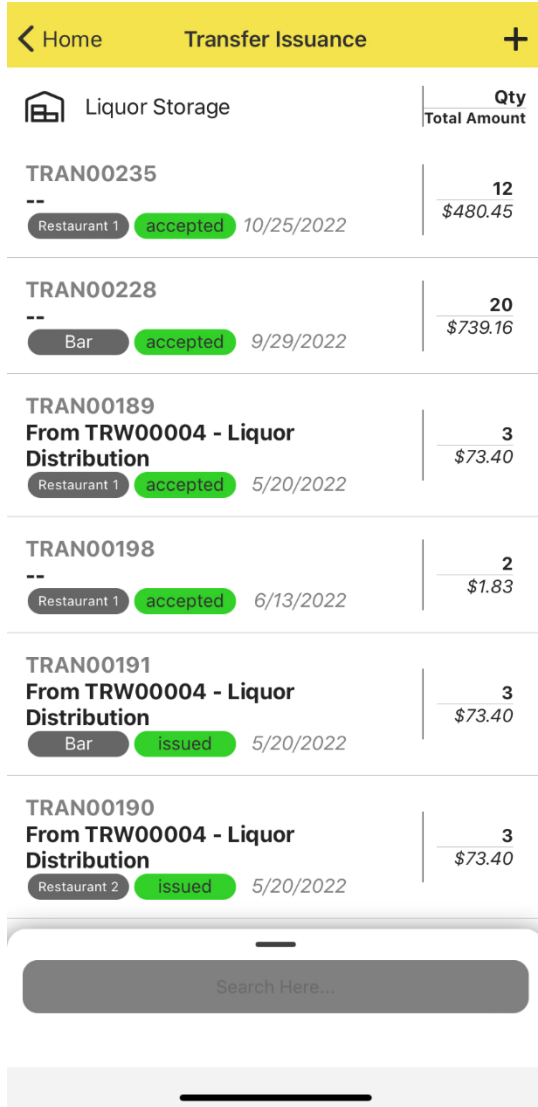
Ordering Options:

Users can choose to order transfers in ascending or descending order for the following fields:

- Code
- DueAt
- UpdatedAt
- CreatedAt
- IssuedAt

Phone Dimensions:

The search bar will always be visible on handheld devices to search for transfers. To reveal transfer filtering and ordering options, swipe up from the bottom of the screen to view these options.



Tablet Dimensions:

The search bar, status filter, and order options will always be visible on tablet devices:

The screenshot shows a tablet interface for 'Transfer Issuance'. At the top, there is a yellow header with a back arrow and 'Home' on the left, and 'Transfer Issuance' in the center. Below the header, there is a 'Liquor Storage' section with a search bar and a magnifying glass icon. To the right of the search bar, there is a 'Q1 Total Amount' column. Below the search bar, there are two filter buttons: 'Choose status' and 'Sort By', both with dropdown arrows. The main content is a list of transactions, each with a unique ID, a location, a status, a date, and a total amount.

Transfer ID	Location	Status	Date	Q1 Total Amount
TRAN00266	Restaurant 1	accepted	3/9/2023	1 \$78.52
TRAN00258	Bar	issued	1/24/2023	6 \$133.88
TRAN00235	Restaurant 1	accepted	10/25/2022	12 \$480.45
TRAN00228	Bar	accepted	9/29/2022	20 \$739.16
TRAN00189	Restaurant 1	accepted	5/20/2022	3 \$73.40
TRAN00198	Restaurant 1	accepted	6/13/2022	2 \$1.83
TRAN00191	Bar	issued	5/20/2022	3 \$73.40
TRAN00190	Bar	issued	5/20/2022	3 \$73.40